



# Wheelchair Power Attachment

Electric Handcycle



[www.elesmart.com](http://www.elesmart.com)

Email: [info@elesmart.com](mailto:info@elesmart.com)

Tel: +86-13685249056

Web: [www.elesmart.com](http://www.elesmart.com)

Add: West Industrial Park, Hutang, Wujin District, Changzhou City, Jiangsu Province, China

# Technical parameters

Product Name: Wheelchair Power attachment

Model: ELESMA A4

Intended Use: Provides power to the wheelchair

Patient Population: The elderly and disabled

Indication: Urban smooth road

Shelf Life: five years (excluding wearing parts)

Wheel Diameter: 10"

Motor Power: 36V 350W

Speed\*: 25KM/H

Torque: 40Nm

Lithium Battery: 7.8AH

Range(KM): 40

Display: LCD

Frame: Foldable

Connection Method: Center



- 1. Gear and Speed Parameters: 3 forward gears, maximum speed of 25KM/H, 1 reverse gear, right-hand control for forward motion.
- 2. Cruise Control Function: Enabled by default, can be turned off.
- 3. Maximum Speed: Affected by actual user conditions, load, road conditions, etc., with a variation of  $\pm 5$ KM.
- 4. Range: Measured with a weight of 50kg work on 1 level on a flat road. Range depends on user weight, road conditions, wheelchair tire condition, battery condition, speed, and driving habits.
- 5. Charger: Complies with EU regulations, EMC tested, 36V dimensions is 104.3\*53\*26mm, 300g, Easy to take !

# Installation instructions

1. Assemble the collapsible parts and the link bar



3. Adjust the link bar angle and screw the nut



5. Push the handlebars until the kickstand are off the ground



7. The frame is shown below



2. Sit in your wheelchair and near the handlebars



4. Attach connecting rod to wheelchair



6. The two are connected as below



8. Turn on the meter



# Dismantlement

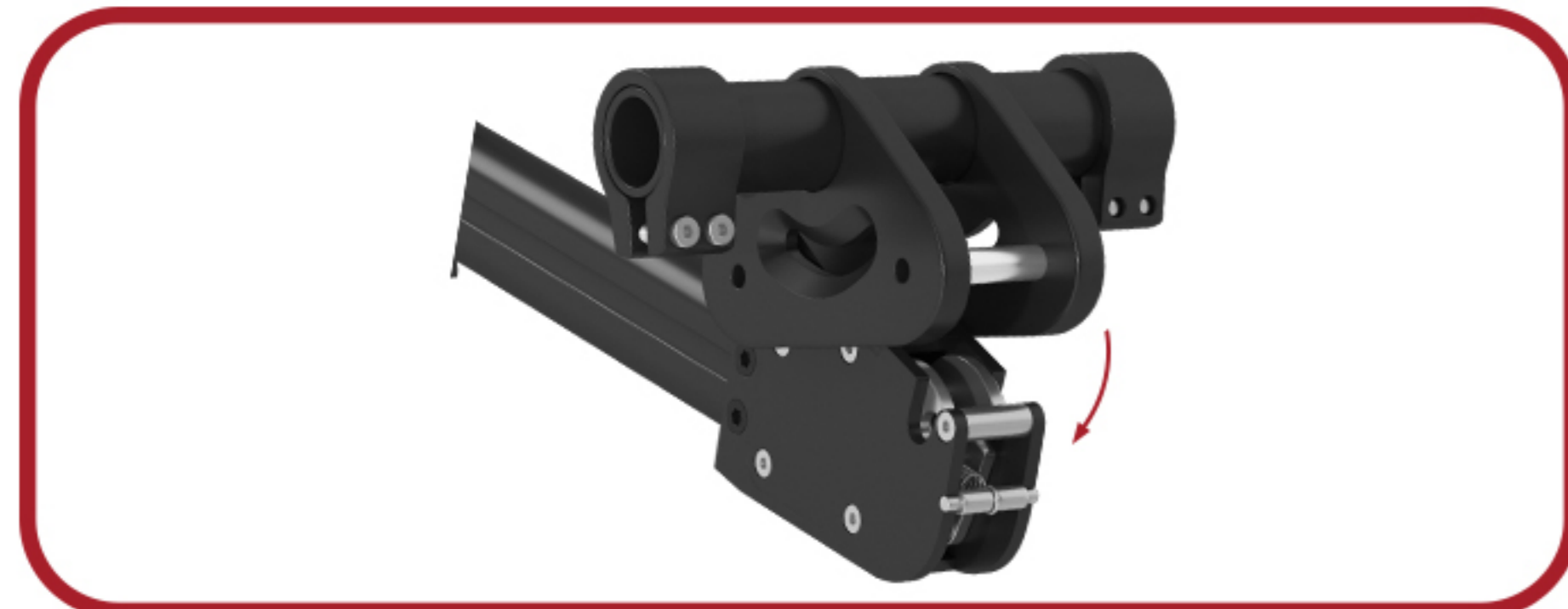
1. Press the switch button as below and hook open



2. Put down handlebars until the kickstand reaches the ground



3. The front end of the connecting rod is out of the wheelchair



4. Push forward the handlebars



# Key switch

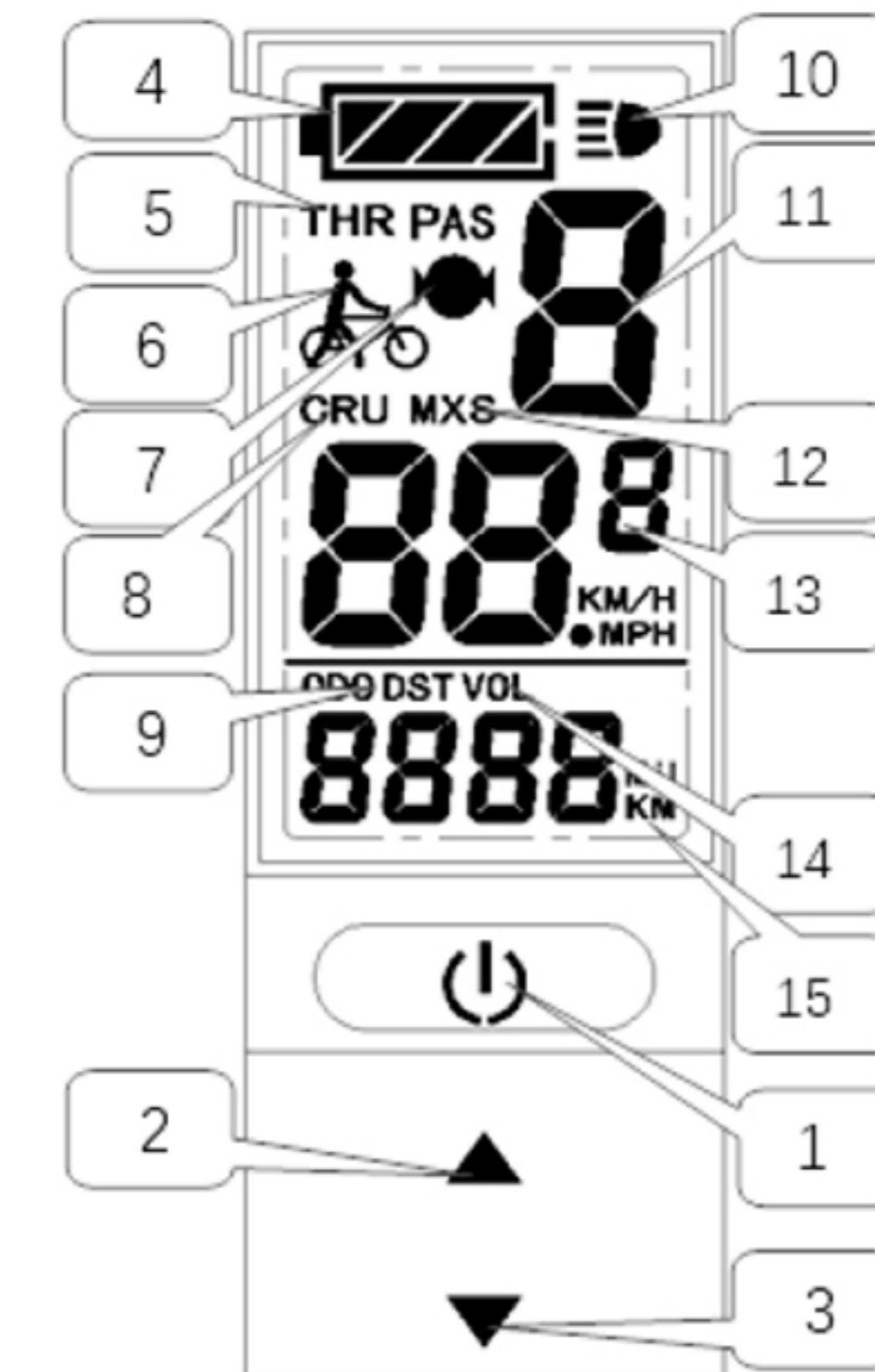


# Matters needing attention

Dear customer, please read this manual before you use KT-LCD04 Display. The manual will guide you use the instrument correctly to achieve a variety of vehicle control and vehicle status displays.

## 1.Functions and Display

Instrument adopts the structural form of integrated design of the main part of the instrument and the operation button.



1		SW Button	9	<b>DST</b>	Single Trip distance
2		UP Button		<b>ODO</b>	Total distance
3		DOWN Button	10		Backlight and headlights
4		Battery volume indicator	11	<b>PAS</b>	PAS mark
5	<b>THR</b>	Throttle mark	12	<b>MXS</b>	MAX speed
6		6Km/H push power assist	13	<b>KM/H</b>	Riding speed(metric)
			14	<b>VOL</b>	Battery voltage
7		The brake mark	15	<b>KM</b>	Distance(metric)
8	<b>CRU</b>	Cruise mark			

## 2.Operation

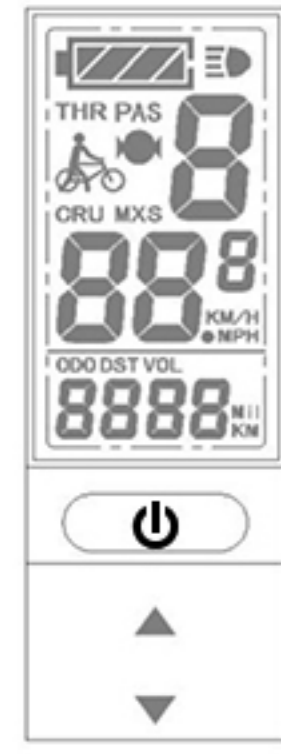
### 1. ON/OFF



Hold button long to turn on/off the power. When the motor stops driving and when the e-bike is not used for a consecutive 5 minutes, The LCD will automatically shut down and cut off the motor power supply.

When the LCD turn on, the screen will show the default interface.

## 2. Display 1



Press **[Power]** button to start up and enter display 1.

### 2.1 Turn on backlight and headlights



Hold **[Up]** long to turn on backlight and headlights (the controller should have headlight drive output function); Hold **[Up]** long again to turn off the backlight and headlights.

### 2.2 Speed level switch



Press **[Left]** or **[Right]** to switch 0-3 level of forward gears. Level 1 is for the minimum power, level 3 is for the highest power.

### 2.3 6Km/H assist promotion function



Hold **[Down]** and **[Bike]** flashes, 6km/h function will on (the vehicle speed doesn't exceed 6 km/h) . Release **[Down]** button, the function will off.

### 2.4 Rest TM&DST data



After power on for 5 seconds, hold **[Up]** and **[Down]** at the same time, single trip riding time (TM) and single trip distance (DST) will flash, hold **[Power]** button shortly, the content of both will be cleared. If have not any action exceed 5 seconds, it will automatically return to the display interface and the original content will be preserved.

## 3. Display 2



Press **[Power]** button, display2 will enter display 3. In the riding mode after 5 seconds, the max speed will change to real speed.

## 4. Display 3



Press **[Power]** button, display 3 will enter display 1. hold **[Power]** for a long time, the display will be turned off and the power also be cut off.

## 5. Automatically Error prompting interface



- 01\_info: Throttle Abnormality
- 03\_info: Motor hall signal Abnormality
- 04\_info: Torque sensor signal Abnormality
- 05\_info: Axis speed sensor Abnormality (only applied to torque sensor)
- 06\_info: Motor or controller has short circuit Abnormality

## 3.General Parameters Setting

### 1. Set maximum riding speed



Power on within 5 seconds, hold **[Up]** and **[Down]** at the same time to enter maximum riding speed Km/h and MXS setting, press **[Up]** or **[Down]** to set the maximum riding speed (default 25 Km/h). P Hold **[Power]** button shortly and go to the next parameter settings.

### 2. Wheel diameter setting



After the maximum riding speed setting, wheel diameter specifications flashes. Press **[Up]** or **[Down]** to set the specifications of wheel diameter. Select from the range of 5, 6, 8, 10, 12, 14, 16, 18, 20, 23, 24, 26, 27.5, 700c, 28 and 29 inches. Hold **[Power]** button shortly and go to the next parameter settings.

### 3. Set the metric units



After wheel diameter setting, press **[Power]** then KM/H and Km flashes. Press **[Up]** or **[Down]** to select metric unit of speed and mileage in synchronization.

Display	Metric	Imperial
Riding speed	Km/h	MPH
Total distance	Km	Mil

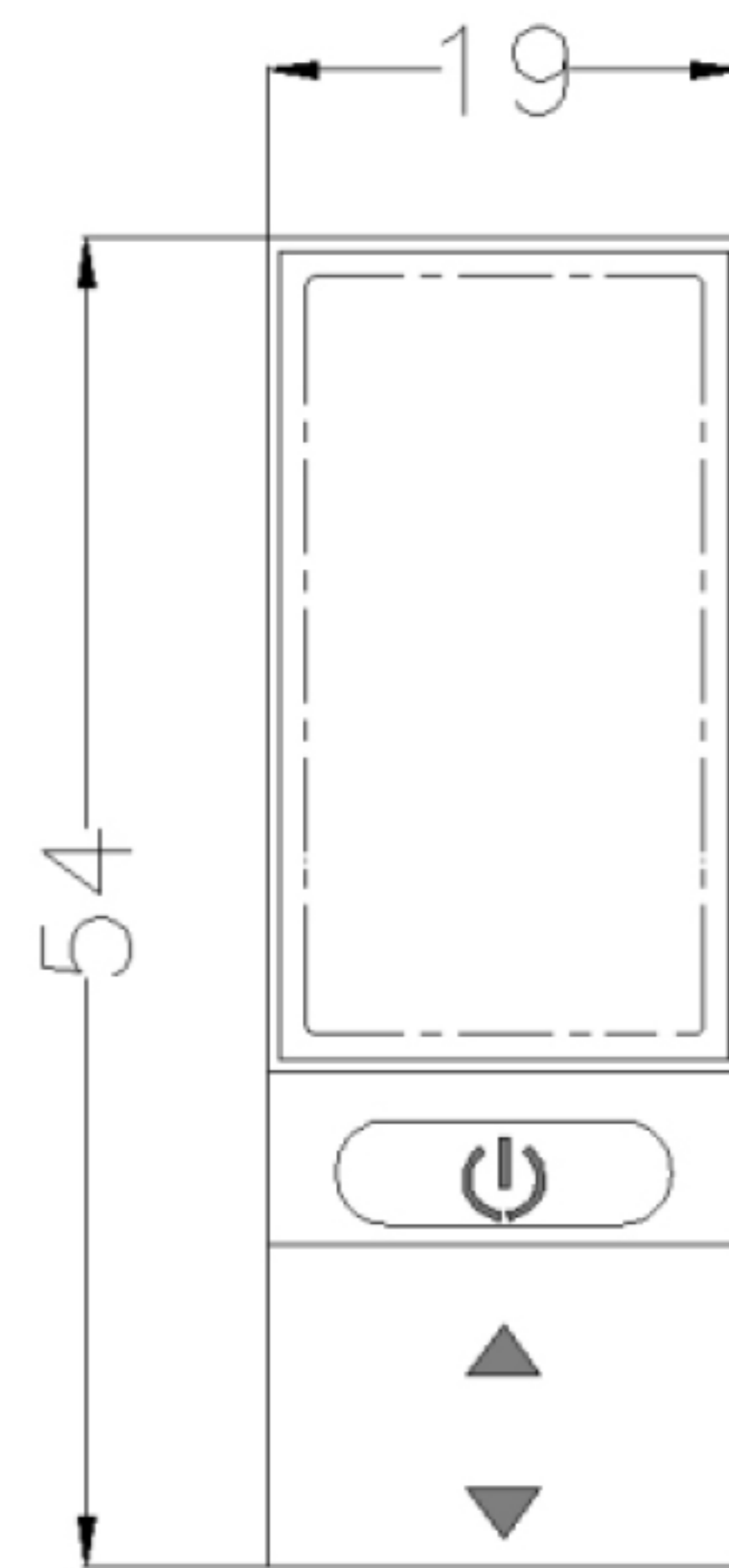
Press **[Power]** to stop flashing on screen after metric unit setting is completed. Hold **[Power]** button long to exit from setting environment of general parameters and save the setting values, return to display 1.

#### 4. Exit from routine project setting

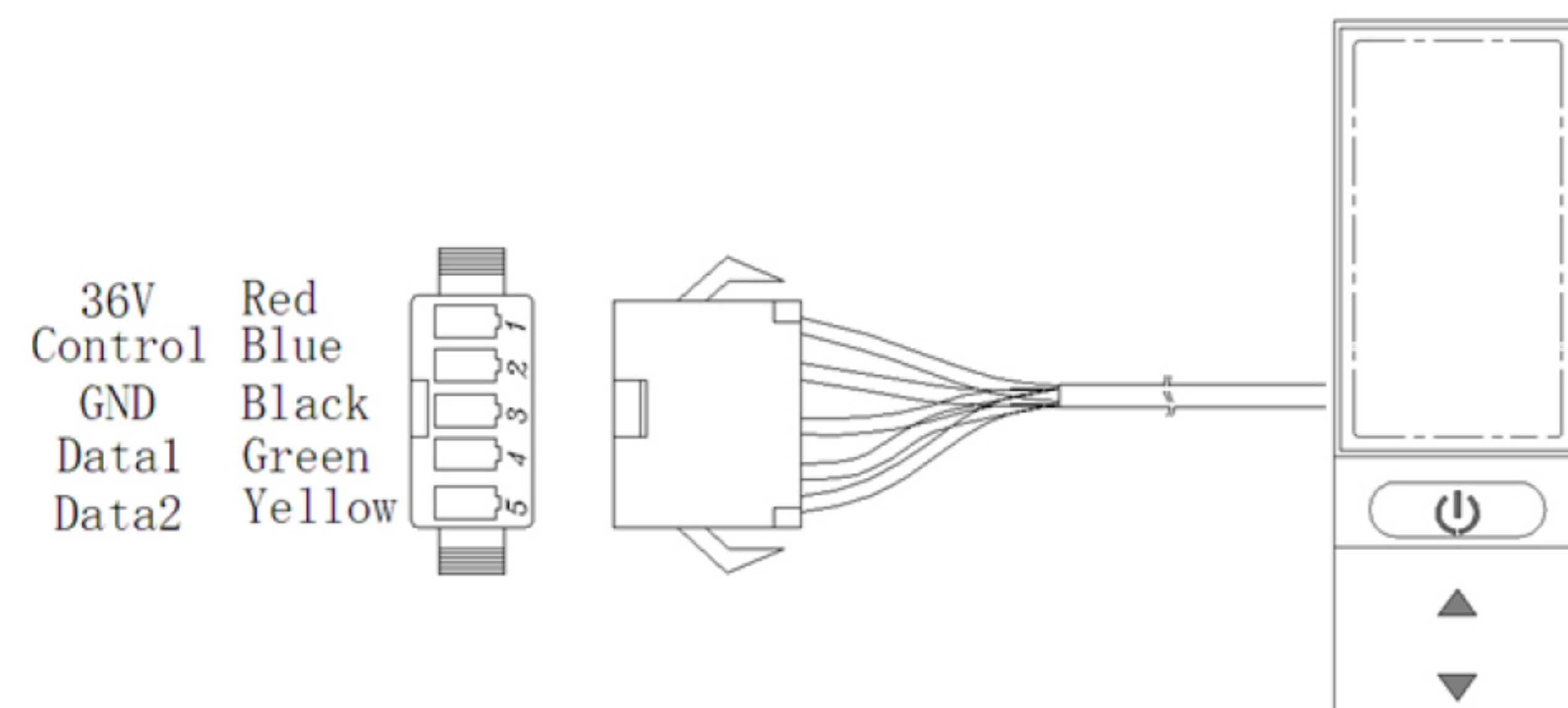
All three general parameters settings can be suspended and return to the display 1 by holding **⏻** button long after each setting is completed, meanwhile the setting values are saved. Under each setting interface, if have not any action more than 1 minute, it will automatically return to display 1, and the setting value won't be saved.

## 4.Outline Drawings and Dimensions

### 1. Dimensions of main instrument body



### 2. Wiring diagram



## Labels, Packing Logo Design

Symbol	Introductions	Symbol	Introductions
	Batch Code		CE Symbol
	Warnings and Precautions		Non-Sterile
	Medical Device		Manufacture Date
	Manufacturer Name Address		Name and Address of European Union Representative
	Country of Manufacture		Model Number
	Importer		Distributor
	Unique Device Identification		Consult instructions for use

### Manufacturer



**Company:** CNEBIKES CO.,LTD

**Address:** West Industrial Park, Hutang, Wujin District, Changzhou City, Jiangsu Province, China

### European Authorized Representative



**Company:** SUNGO Europe B.V.

**Address:** Fascinatio Boulevard 522,Unit 1.7,2909VA Capelle aan den IJssel,The Netherlands

## Cleaning and Maintenance

Wipe with a neutral cleaner and wipe with a clean, soft cloth.  
Check the screws are loose and locked with matching screwdriver .

# Warranty

## Warranty Coverage

Thank you for choosing the ELES MART Electric Wheelchair Handcycle. This product is covered by a 2-year limited warranty from the date of purchase. The warranty applies to defects in materials and workmanship under normal use conditions.

## Warranty Period

- Motor and Frame: 2 years from the date of purchase.
- Electronic Components (LCD Display, Controller, Battery etc.): 1 year from the date of purchase.
- Wearable Parts (Tires, Brake Pads, etc.): 6 months from the date of purchase.

## What is Covered?

- Defects in materials and workmanship.
- Functional failures due to manufacturing defects.
- Malfunction of the motor, battery, and other critical components under normal usage.

## What is Not Covered?

- Damage caused by misuse, abuse, or accidents (e.g., improper handling, water damage, etc.).
- Normal wear and tear of consumable parts such as tires, brake pads, and handles.
- Unauthorized modifications or repairs.
- Damage resulting from failure to follow the user manual instructions.
- Cosmetic damage, including but not limited to scratches, dents and discoloration.

## Warranty Claim Procedure

1. Contact Customer Support: Reach out to our customer support team via email [info@elesmart.com](mailto:info@elesmart.com) or call us at +86-13685249056 with your proof of purchase, product serial number, and a description of the issue.
2. Return Authorization: Our team will assess the issue and may request you to ship the defective part(s) back to us for further inspection. We will provide you with a return authorization number and instructions on how to return the product.
3. Repair or Replacement: If the defect is covered under warranty, we will repair or replace the defective part(s) at no additional cost to you. Repaired or replaced parts will be warranted for the remaining period of the original warranty.
4. Shipping Costs: The customer is responsible for shipping costs to return the product to us. If the warranty claim is valid, we will cover the shipping costs to return the repaired or replaced product to you.

## Important Notes

- This warranty is valid only for the original purchaser and is non-transferable.
- Warranty coverage is only valid in the country of purchase.
- Any replacement or repaired parts provided under this warranty will assume the remaining warranty period of the original product.

## Customer Information

- Name: \_\_\_\_\_
- Phone Number: \_\_\_\_\_
- Email Address: \_\_\_\_\_
- Date of Purchase: \_\_\_\_\_
- Serial Number: \_\_\_\_\_
- Place of Purchase: \_\_\_\_\_
- Address: \_\_\_\_\_

## For Service, Contact:

ELES MART Customer Service

Phone: +86-13685249056 Email: [info@elesmart.com](mailto:info@elesmart.com) Website: [www.elesmart.com](http://www.elesmart.com)



## WARNING

1. When do emergency braking, please do not only brake the hand cycle, but also you must brake your rear wheel of wheelchair itself.
2. Normally, please do not brake hard, try to brake it slowly.
3. Recommended to use wheelchair power attachment at low speeds around 12km/h and avoid driving too fast.

**We are committed to providing you with the best products and services.  
Thank you for choosing ELES MART.**